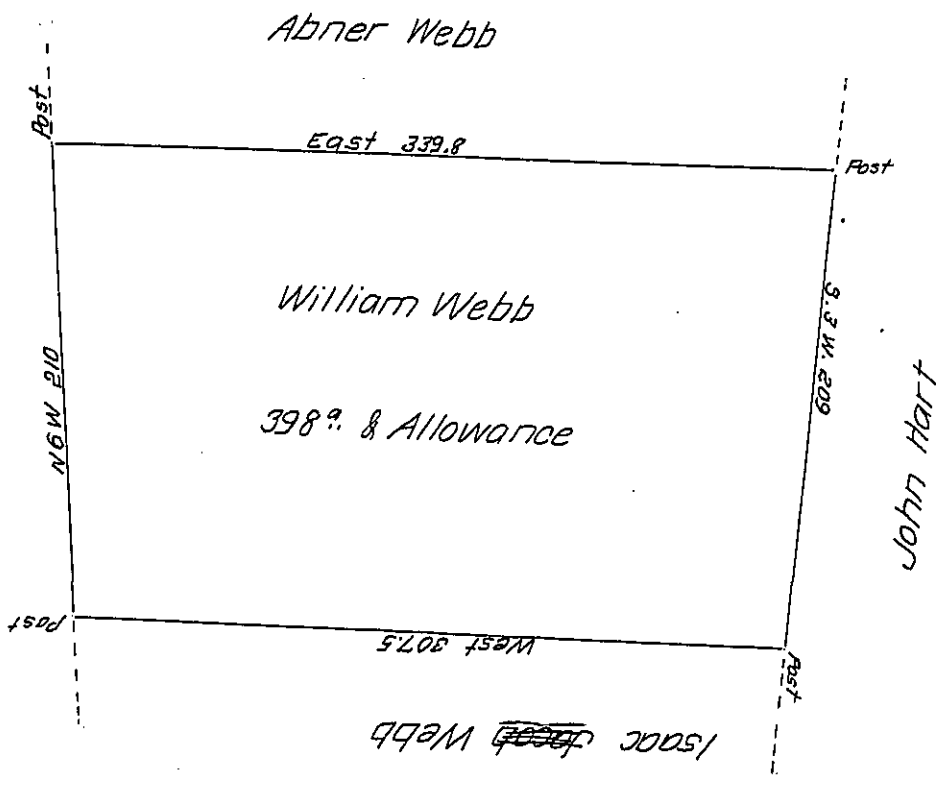


pg. 65

C-226-13  
Nathan Scholfield



Situated in Morrison's Cove, Woodberry Township Bedford County, Containing  
 398 acres and allowance of Six p. Cent for Roads &c<sup>a</sup> Surveyed for William Webb  
 10<sup>th</sup> Day of June A.D. 1794. In pursuance of a Warrant dated the 30<sup>th</sup> Day of  
 August A.D. 1793, by George Woods Deputy Surveyor

Examined by me 20<sup>th</sup> Sep<sup>r</sup> 1808

To Samuel Cochran Esq<sup>r</sup>

John Anderson

Surveyor General

Deputy Surveyor

Now Middle Woodbury Township.

IN TESTIMONY that the above is a copy of the original remaining on file in  
 the Department of Internal Affairs of Pennsylvania, made  
 conformably to an Act of Assembly approved the 16th day of  
 February, 1833, I have hereunto set my Hand and caused  
 the Seal of said Department to be affixed at Harrisburg,  
 this Fifteenth day of July 1907

*Henry Houck*  
 Secretary of Internal Affairs.